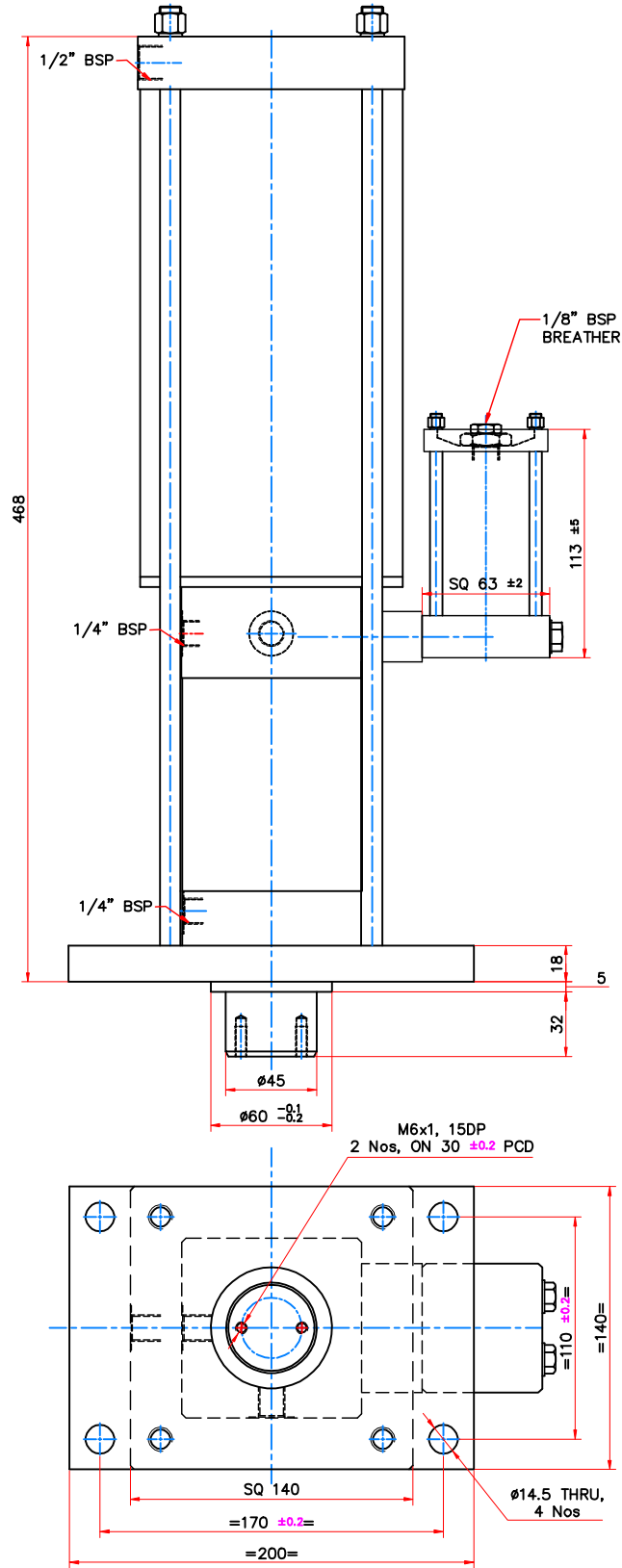
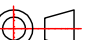




DO NOT MEASURE DRAWING . IF IN DOUBT PLEASE ASK.



Unspecified m/c deviations (med to IS 2102)			TITLE		HYDRO-PNEUMATIC TOOL DECLAMP CYLINDER DOUBLE ACTING			
Linear-Length or Diameter			MODEL		PCSS-12545-VC16		Note: Remove all sharp corners 0.5x45° All dimensions are in mm unless specified	
Over	Upto & inc.	TOL	STROKE		16			
-	6	±0.1	INT. RATIO		1:25			
6	30	±0.2	MOUNTING		FRONT FLANGE			
30	120	±0.3	RATED PR.		7 kg/cm²		QTY	
120	315	±0.5	THEORETICAL THRUST ● 4 kg/cm²		5000 kgf		SCALE	NTS
315	1000	±0.8	THEORETICAL THRUST ● 5 kg/cm²		6250 kgf		DRAWN	RBP
1000	2000	±1.2	THEORETICAL THRUST ● 6 kg/cm²		7500 kgf		CHKD	RKS
Length of shorter side of angle							APPD	RKS
Over	Upto & inc.	TOL	ALTERATION					
-	6	±1°						
6	30	±30°						
30	120	±20°						
120	315	±10°						
								
			PEENYA BANGALORE-58 INDIA					

Surface Finish	Ra Value-μ	Roughness No.
▽	0.05	N1
▽▽	0.1	N2
▽▽▽	0.2	N3
▽▽▽▽	0.4	N4
▽▽▽▽▽	0.8	N5
▽▽▽▽▽▽	1.6	N6
▽▽▽▽▽▽▽	3.2	N7
▽▽▽▽▽▽▽▽	6.3	N8
▽▽▽▽▽▽▽▽▽	12.5	N9
▽▽▽▽▽▽▽▽▽▽	25	N10
▽▽▽▽▽▽▽▽▽▽▽	50	N11
▽▽▽▽▽▽▽▽▽▽▽▽		N12